

## 2.6 Community

While actively advancing mineral resource exploration, the Company upholds respect for human rights as a core principle. The Company fosters mutual trust through community consultation mechanisms and promotes multicultural coexistence. Additionally, the Company contributes to cultural heritage preservation as a bridge for community connection. Through public welfare initiatives, the Company transforms resource benefits into lasting value for communities, balancing economic performance with social well-being and setting a standard for responsible, people-centered mining.

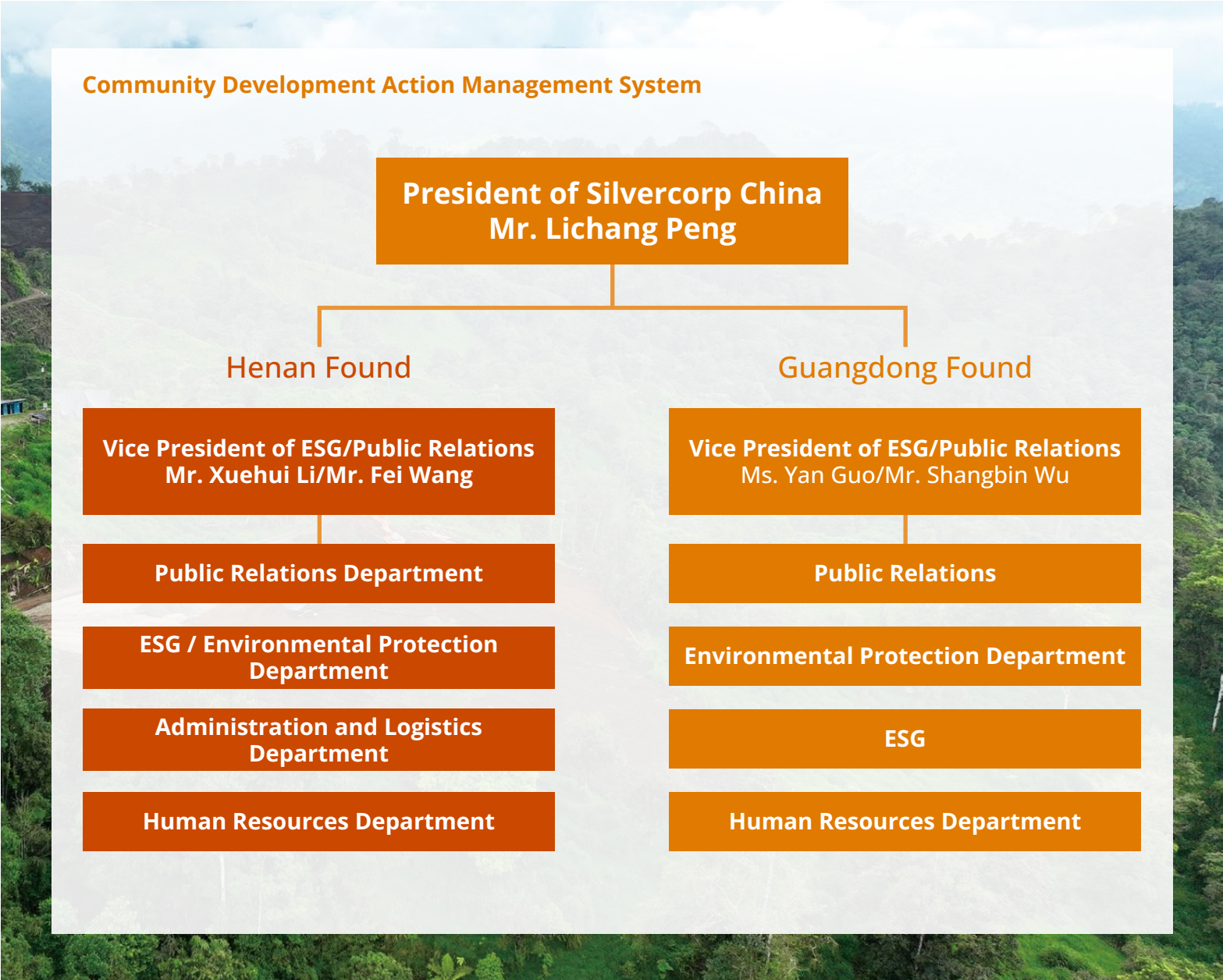
### 2.6.1 Build Harmonious Communities

The Company continuously improves its community management mechanisms by ensuring land acquisition complies with legal requirements and by respecting and protecting human rights in its areas of operation. The Company also initiates diverse activities to promote communication among stakeholders, and fosters harmonious relationships with local communities, thus achieving a win-win situation that balances the Company's economic benefits with the development of these communities.

#### Lawful Land Acquisition


The Company is dedicated to building harmonious relations between the business and local communities by establishing a community development action management system and enhancing community management mechanisms. Both the Ying Mining District and the GC Mine have set up a Community Relations Working Group, chaired by a dedicated vice president, handling community affairs in collaboration with environmental protection, human resources, and other departments.

The Company conducts land acquisition in strict adherence to laws and regulations, aligning with industry best practices. Through active consultation with stakeholders, including local residents and community representatives, agreements are jointly signed prior to land use. Additionally, the Company provides employment opportunities for affected residents, ensuring they are treated fairly, receive reasonable compensation, and are equipped with the skills necessary for sustainable livelihoods.



Respect Local Human Rights

In production and operations, the Company fully respects and safeguards local ethnic cultures, beliefs, traditions, and values, while upholding the rights of local residents to participate in and stay informed of matters that may affect them. The Company ensures that community engagement aligns with local customs and strictly prohibits any business practices that may harm local culture or the environment. The Company does not tolerate any violations of human rights in its operations and works to strengthen human rights awareness among employees through training and advocacy. The Company firmly rejects any support for violence or contributions to serious human rights abuses, particularly when operating in conflict-affected or high-risk areas. Silvercorp's Community Relations Policy emphasizes the protection of human rights and the rights of local residents. There were no violations of the rights of indigenous peoples in Fiscal 2025.



**Policy Disclosure**

Please click the link or scan the QR code to access the document

*Community Relations Policy*

Enhance Stakeholder Communication and Participation

The Company conducts community visits regularly to collect opinions and feedback from local residents and stakeholders. These inputs are considered during our decision-making process. In the event of disputed incidents, we will work under the supervision of local government agencies, the community's self-governing bodies, and other stakeholders to carefully verify and coordinate a timely resolution. We will also provide updates to the community and stakeholders on the progress and outcomes of the incident. Additionally, we have established a channel for community complaints to collect feedback and suggestions from local residents. By identifying potential issues early and taking proactive measures to address them, we mitigate possible negative impacts.



If Silvercorp has negatively impacted your community, please notify us via the following hotline numbers.

**Ying Mining District, Henan Province, China:**  
**0379-66061189**

**GC Mine, Guangdong Province, China:**  
**0766-6602656**

**El Domo Copper-Gold Project:**  
**+593 (03)2658 150**

The Company conducts close communication with stakeholders—including local government agencies, NGOs, and local residents—on key issues such as land use, recruitment, infrastructure construction, and public welfare activities. Community engagement plans are formulated based on the actual situation of the local communities to reduce the impact of mining operations on local communities, create employment opportunities and improve local infrastructure, and build strong relationships between the Company and communities. These efforts enhance community participation and a sense of belonging, ultimately promoting mutual development.

Case Study

Cultural Integration and Community Empowerment During the Carnival in Ecuador

The Bolivar's Carnival, focused on preserving and revitalizing local traditions and cultures, is held annually in the area surrounding the El Domo project. Actively engaged as a strategic community partner, Curimining provides comprehensive logistical support for the event. During the celebration, elements of intangible cultural heritage, such as festive rhythms and well-dressed dance troupes, take center stage. Curimining donates prizes to outstanding performances and encourages its employees to interact actively with community residents and participants. By transcending the conventional image of mining companies, Curimining establishes itself as a "good neighbor," characterized by mutual respect and meaningful participation while cherishing and preserving the community's unique traditional culture. The Carnival is not only a joyful celebration that reflects collective creativity but also serves as a crucial link for cultural interaction between the two parties, fostering intergenerational cultural identity and integration.



2.6.2 Give Back to the Community

The Company continuously conducts public welfare donations and volunteer services that span key areas such as rural revitalization, community development, education support, and assistance for disadvantaged groups. These ongoing efforts reflect our deep concern for the well-being of the communities we serve. Additionally, the Company actively sponsors the development and growth of specialized foundations and provides fundings to various foundations and welfare organizations, thereby strengthening the bond between businesses and communities.

Joint Cultural Preservation and Creation

The Company places great importance on the preservation and inheritance of local culture. In addition to supporting the community in organizing traditional cultural, folklore, and festive activities, the Company also actively practices a series of measures to protect cultural heritage during projects, promoting harmonious coexistence with cultural heritage conservation.





Local Hiring and Economic Development

The Company is dedicated to fostering shared development with local communities by deepening the connections between businesses and communities and facilitating co-construction between villages and enterprises. The Company achieves this by addressing drinking water issues, improving infrastructure, creating employment opportunities, and providing support for agricultural initiatives. Since its inception, Guangdong Found has invested over \$1.52 million in improving community infrastructure, addressing livelihood challenges, and supporting local education and rural revitalization efforts. This includes more than \$1.29 million allocated to the construction and enhancement of roads in surrounding communities, \$48.48 thousand invested in addressing drinking water issues, and over \$249.31 thousand directed towards education, rural revitalization, and poverty alleviation initiatives. These efforts help empower local communities and promote sustainable development. In Fiscal 2025, Silvercorp's local hiring rate reached 65.57%.

Henan Found

- Payment of Henan Found contracting infrastructure construction projects to local ① businesses: **\$1.56** million
- Jobs directly created by Henan Found for local working-age population: **3,463**
- Raw food ingredients purchased by Henan Found from local communities at a fixed rate: **\$0.93** million
- The local hiring rate reached **82.55%**

Guangdong Found

- Payment of Guangdong Found contracting infrastructure construction projects to local ② businesses: **\$0.29** million
- Jobs directly created by Guangdong Found for local working-age population: **132**
- Raw food ingredients purchased by Guangdong Found from local communities at a fixed rate: **\$0.25** million
- The local hiring rate reached **49.82%**

① ② The term 'Local' refers to the county-level administrative region where the project is located.



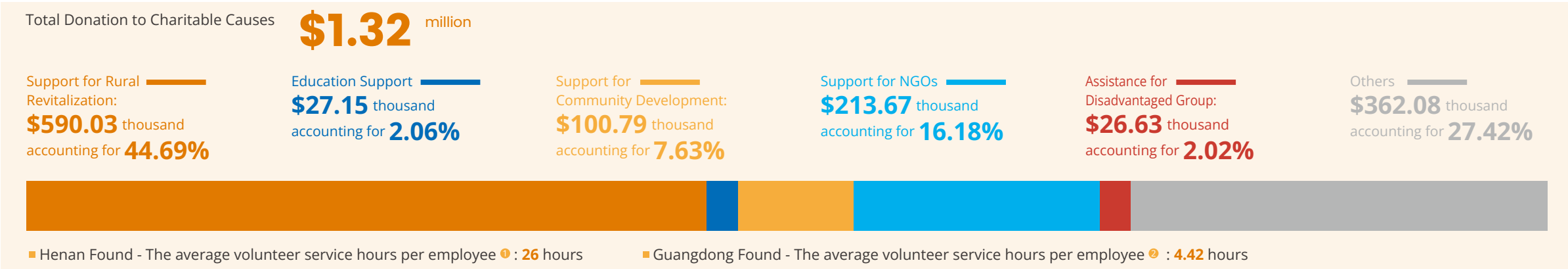
Engagement in Charitable Causes

The Company has consistently upheld the charity principle of “sourcing from society, giving back to society.” The Company actively participates in various social welfare and charitable initiatives, driven by a commitment to benefit

the community and contribute positively to society. In Fiscal 2025, Silvercorp donated a total of \$1.32 million, funding activities such as community construction, support for disadvantaged groups, educational initiatives, and

foundations. These efforts aim to foster a culture of public welfare and promote philanthropy.

In Fiscal 2025



① ② This indicator is calculated by dividing the total hours of employee volunteer service by the total number of employees participating in volunteer service activities.

